

FIRE HOSE CABINET LOCK

013



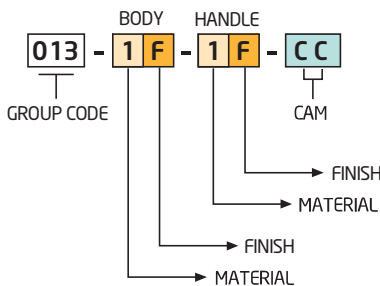
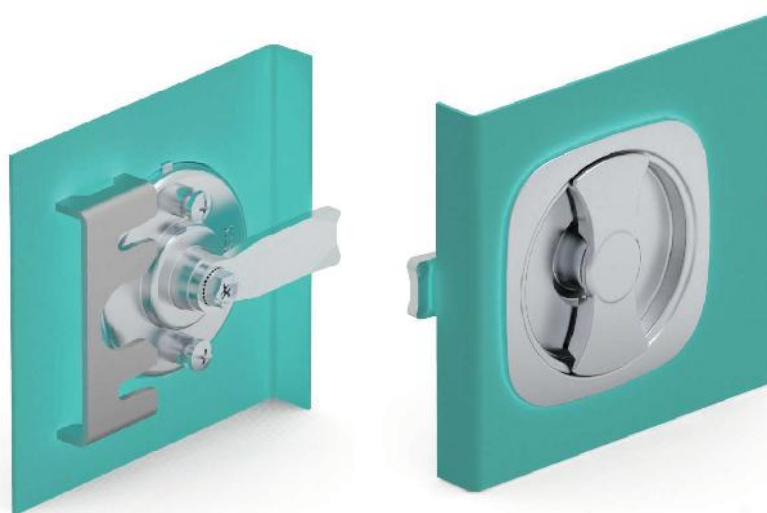
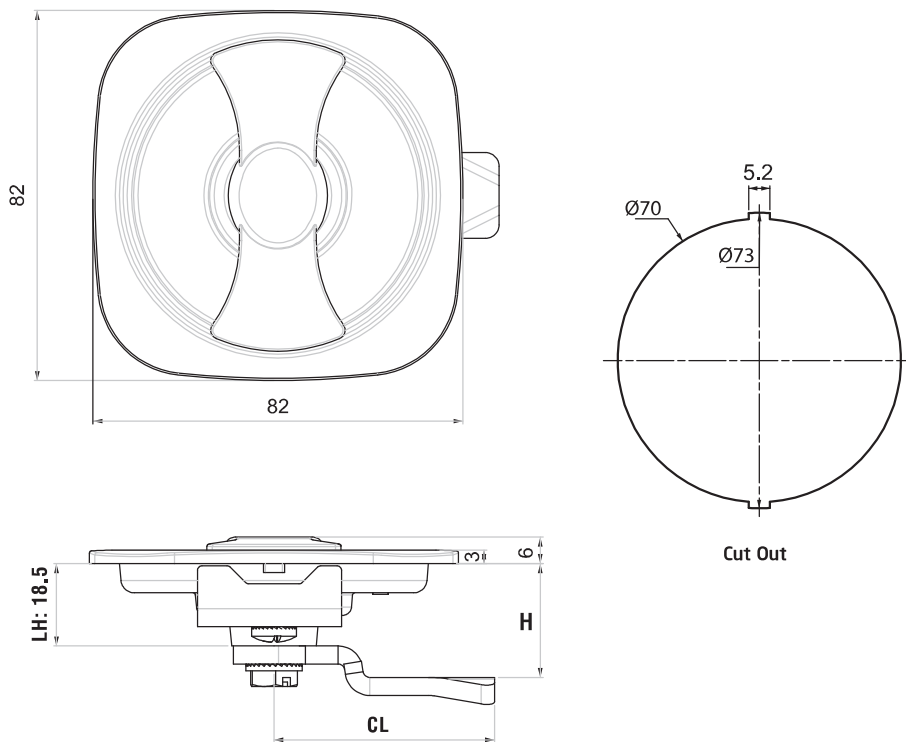
- Designed for fire hose cabinet.
- Special fixing plate supplied easy fixing
- Flush design provides flat surface on cabinet.
- Customized colors are available

APPLICATIONS

Fire hose Cabinet

MATERIAL

BODY : Zamak DIN-EN 1774-ZnAl4Cu1  
 KNOB : Zamak DIN-EN 1774-ZnAl4Cu1  
 CAM : Steel  
 FIXING PLATE : Steel



▶ For cams please check page:: 152 - 153

MATERIAL	M	FINISH	F
Zamak	1	Chrome	1
		Black coated	2

CAM LOCK - WING KNOB

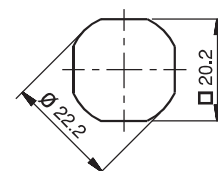
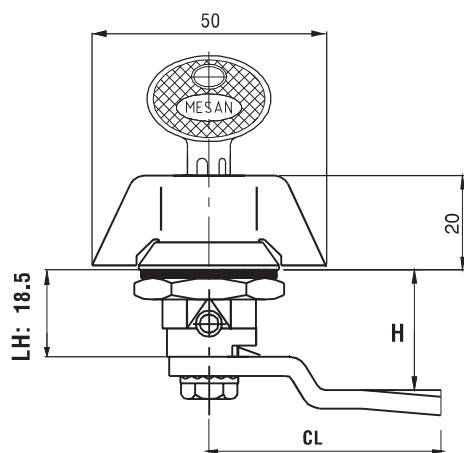
065



LH/RH



RoHS



Cut out

- Quarter turn operation.
- Available in all die-cast zinc alloy or with polyamide wing knob and housing.
- Optional blind version.

APPLICATIONS

Electric panels, machinery covers

MATERIAL

HOUSING : Zamak DIN-EN 1774-ZnAl4Cu1

CAM : Steel or Plastic

GASKET : Rubber

065 1-1-DD-CC  
ZAMAK - CHROME

065 1-2-DD-CC  
ZAMAK - BLACK COATED

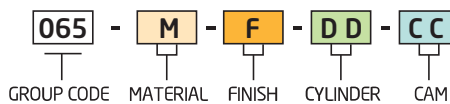
065 2-0-DD-CC  
PLASTIC



No cylinder '00'



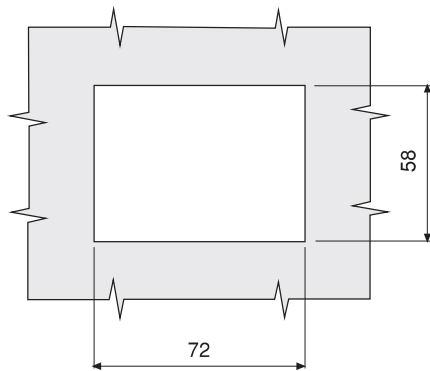
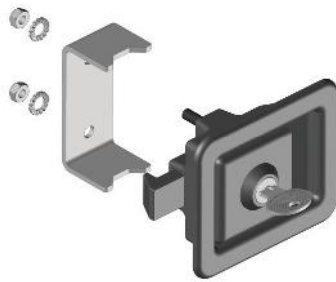
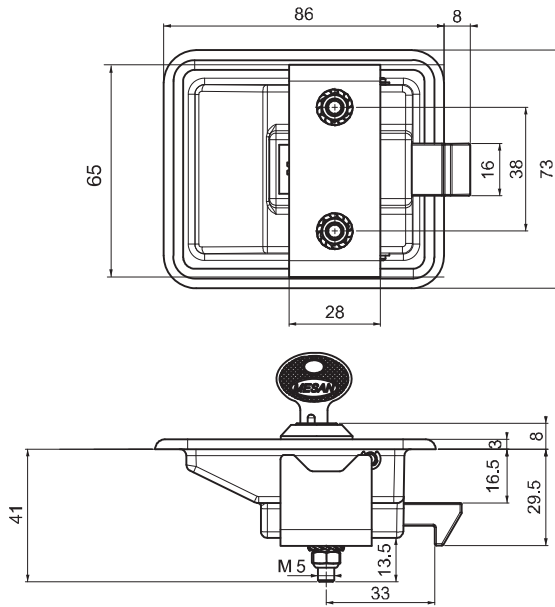
PRODUCT CODE



MATERI-	M	FINISH	F
Zamak	1	Chrome	1
		Black coated	2
Plastic	2	No Finish	0

Cylinder	SPECIFICATIONS	DD
	No cylinder	00
	Keyed alike	01
	Keyed differ	02
	Stainless steel dust cap (Keyed alike)	03
	Stainless steel dust cap (Keyed differ)	32
	Master System	04
	Euro key (5333)	05
	CH751 (Stainless steel dust cap)	07

▶ For cams please check page: 150 - 151



Cut out

**PRODUCT CODE**
**116 - DD**

GROUP CODE    CYLINDER

SPECIFICATIONS	DD
No Cylinder	00
Keyed alike	01
Keyed differ	02

**116**
**PUSH TO CLOSE LOCK**
**IP 54**

**LH/RH**

**RoHS**


- Delrin cams. No locking device needed.
- Lock can be opened from inside by moving cam.

**APPLICATIONS**

Generators, compressors, electric panels, machinery covers

**MATERIAL**

BODY : Polyamid DIN-EN ISO 1043-1 PA6 GFR 30

HANDLE : Zamak DIN-EN 1774-ZnAl4Cu1

CAM : Delrin

MOUNTING BRACKET : Steel

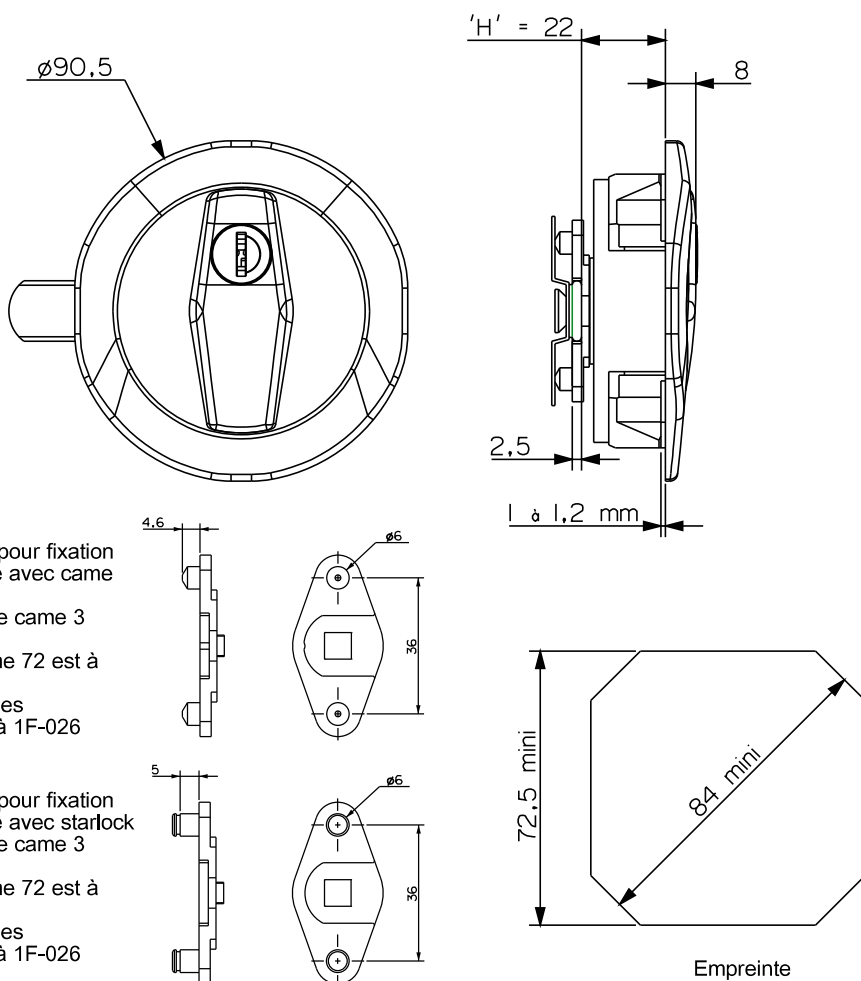


No cylinder "00"

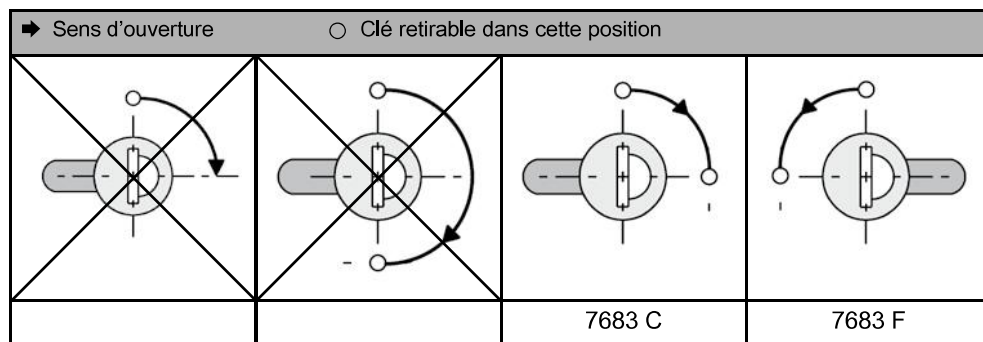
# Poignée encastrable ronde Série 7683

## Versions 7667, 7681, 7683

### PROGRAMME 7600



Came droite : 'H' = 22  
 Came pliée : 'H' = 22 ± hauteur de pli  
 (voir tableau cote 'D' page 1F-026).



### Profils de clé disponibles

- Série 9000 (x 500)
- Série F5000 (x 500)
- Série 6000 (x 1000)

### Boîtier:

- Noir PA 6.6 30%

### Versions

- 7683 Zamack chrome mat
- 7681 zamack époxy noir
- 7667 PA noir

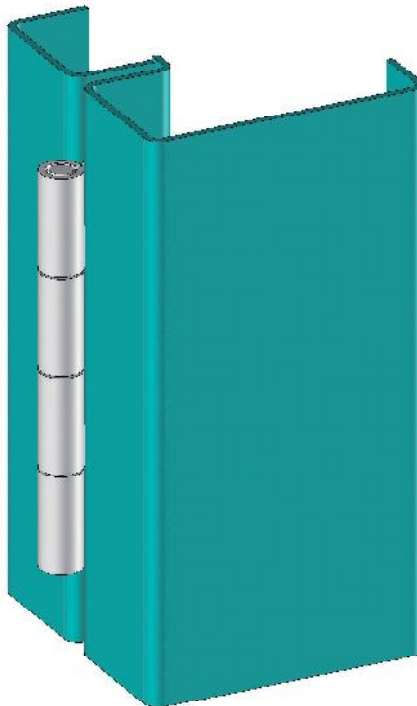
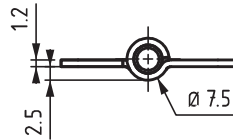
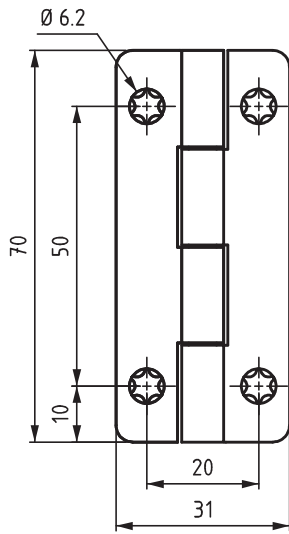
### Came 3 points

### Versions disponibles

Stator, barillet et came						Fixation poignée
Barillet	Came	Fixation came	Combinaisons			
B054B	Capot inox	Came 2 ou 3 points	Vis et rondelle	9001-9500 ou F5001-F5500		avec clé passe
B146B	Capot inox	Came 2 ou 3 points	Vis et rondelle	6001-7000	avec clé passe	Clipsable

### Autres références voir page

- Came de 1F-025 à 1F-026



2899

LEAF HINGE

New



LH/RH



**APPLICATIONS**

Fire hose cabinets, Electric panels,

**MATERIAL**

BODY : Steel

PIN : Stainless Steel

Hinge Rotation Angle



**PRODUCT CODE**

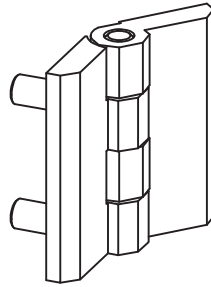
2899 - 6 - 3  
 GROUP CODE MATERIAL FINISH

LEAF HINGE

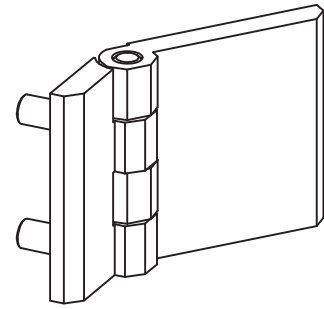
399



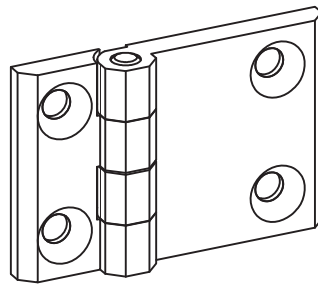
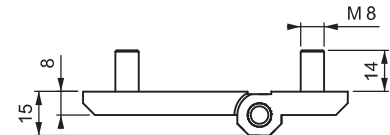
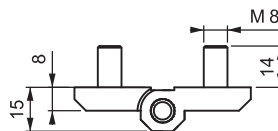
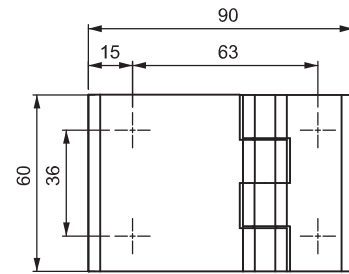
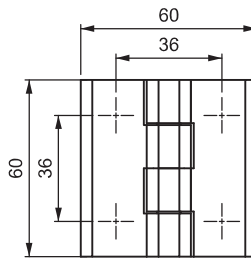
LH/RH



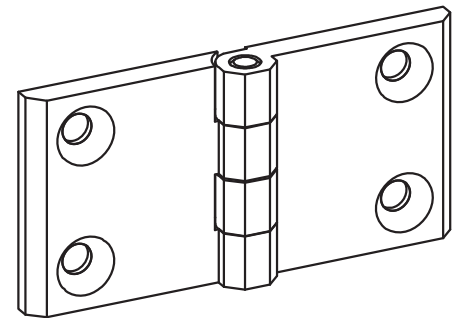
V : 1



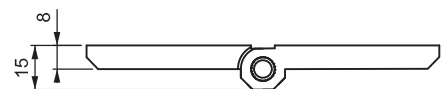
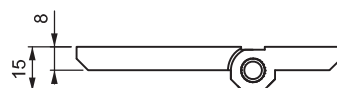
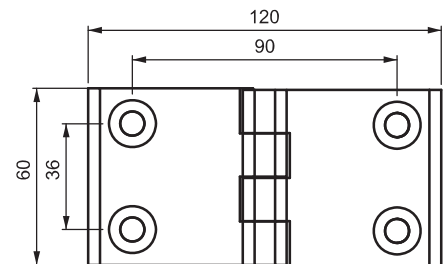
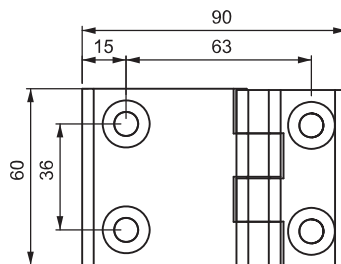
V : 2



V : 5



V : 6



- Generally, used for plain / flush mounted, isolated, heavy doors.
- Stud versions fitted with M8 x 14mm threaded stud.
- Stainless steel (AISI 304) hinge pin.
- Available in three dimensions: 60 mm x 60 mm, 60 mm x 90 mm and 60 mm x 120 mm. Hole or stud fixing.

APPLICATIONS

Generators, machinery covers, electric panels

MATERIAL

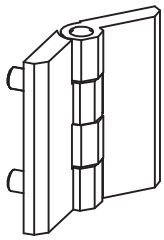
BODY: Zamak DIN-EN 1774-ZnAl4Cu1  
PIN : Stainless Steel

Hinge Rotation Angle

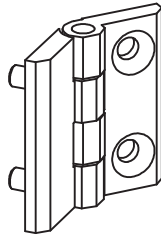


199

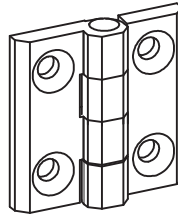
LEAF HINGE



V : 1



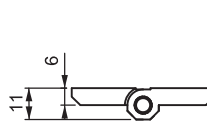
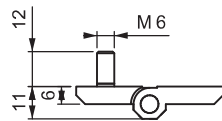
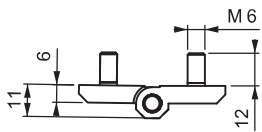
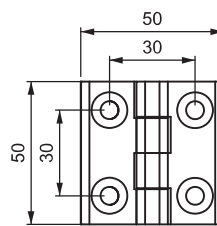
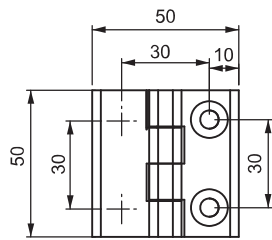
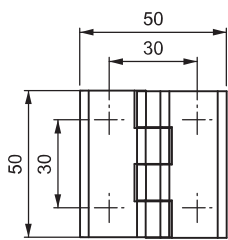
V : 2



V : 3



LH/RH



- Generally used for plain / flush mounted doors.
- Stud versions fitted with M6 x 12mm threaded stud.
- Stainless steel (AISI 304) hinge pin. Maximum hinge rotation 270°.

**APPLICATIONS**

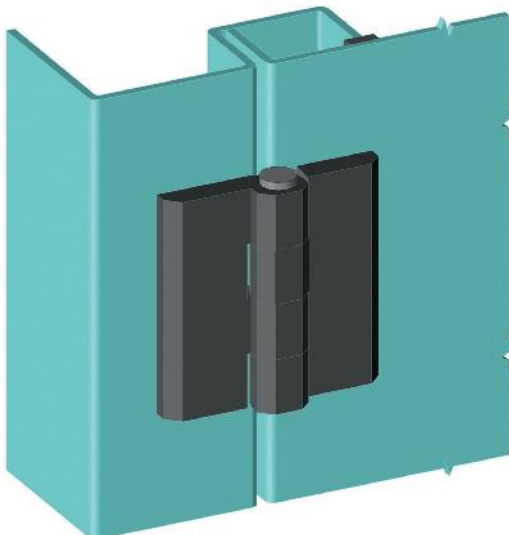
Electric panels, build-in covers.

**MATERIAL**

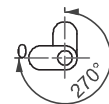
BODY : Polyamide DIN-EN ISO 1043-1  
PA 6 GFR 30  
PIN : Stainless Steel

**2-4**

Flat hinges



Hinge Rotation Angle



**PRODUCT CODE**

199 - 2 - 0 - V  
GROUP CODE MATERIAL FINISH VERSION

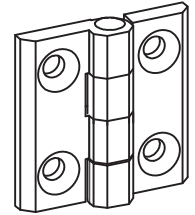
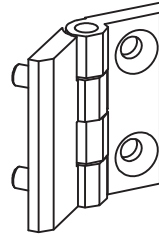
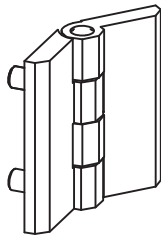
<b>MATERIAL</b>	<b>M</b>	<b>FINISH</b>	<b>F</b>
Plastic	2	No finish	0

LEAF HINGE

099



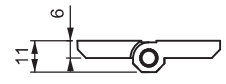
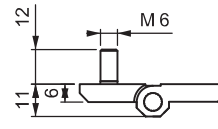
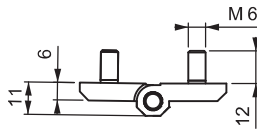
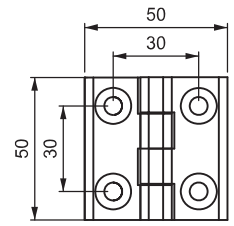
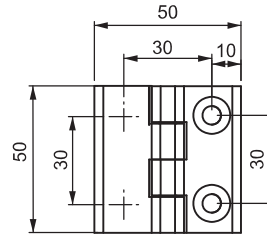
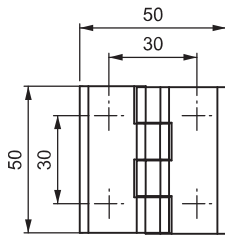
LH/RH



V : 1

V : 2

V : 4



- Generally used for plain / flush mounted doors.
- Stud versions fitted with M6 x 12mm threaded stud.
- Stainless steel (AISI 304) hinge pin. Maximum hinge rotation 270°.
- Available in three dimensions: 50 mm x 50 mm, 50 mm x 63 mm and 50 mm x 76 mm. Hole or stud fixing.

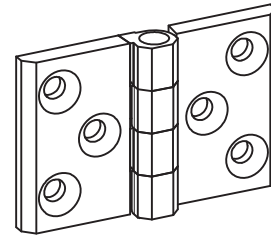
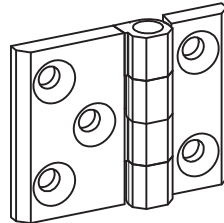
APPLICATIONS

Electric panels, build-in covers.

MATERIAL

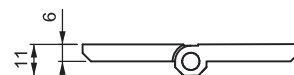
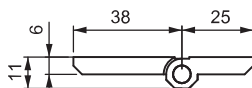
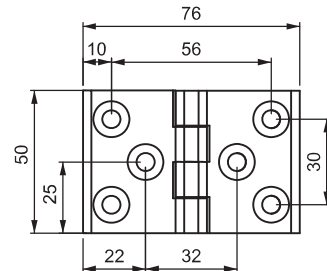
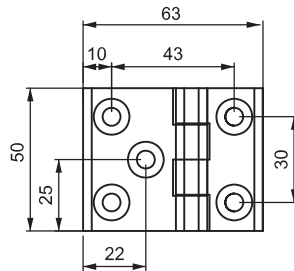
BODY: Zamak DIN-EN 1774-ZnAl4Cu1

PIN : Stainless Steel



V : 5

V : 6



Hinge Rotation Angle



Flat hinges  
2-4